

# PROGNOSYS FOR TU5 SERIES TURBIDIMETERS

## Eliminate last-minute maintenance emergencies.

Prognosis is a predictive diagnostic system that allows you to be proactive in your maintenance, by alerting you to upcoming instrument issues. Know with confidence whether changes in your measurements are due to changes in your instrument or your water.



### Measurement Indicator

The measurement indicator monitors the instrument's components and uses that information to alert the user to upcoming instrument needs before measurements become questionable.



### Service Indicator

The service indicator tracks the number of days until the instrument will require maintenance or service.

**Time to plan your maintenance *before* your measurements are affected.**

### MAINTENANCE REQUIRED



#### Measurement Indicator

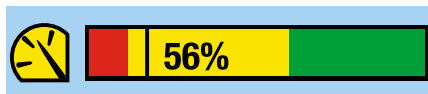
- Measured turbidity is above maximum instrument measured limit
- No laser functionality
- Vial condition unacceptable
- Any instrument error



#### Service Indicator

- 1 day or less remaining until the next recommended maintenance task
- Laser replacement due
- Desiccant requires change
- Automatic Cleaning Module wiper replacement due

### MAINTENANCE PENDING



#### Measurement Indicator

- Measured turbidity is approaching maximum calibration or instrument measured limit
- Laser functionality is reduced
- Drying system compromised
- Check vial for cleanliness and condensation
- Flow is outside of expected range
- Any instrument warning



#### Service Indicator

- 2 - 7 days remaining until the next maintenance task (user adjustable)
- Laser replacement pending
- Decreasing desiccant useful life
- Automatic Cleaning Module wiper requires change soon

### MAINTENANCE PERFORMANCE



#### Measurement Indicator

- Measured turbidity is within an appropriate range for calibration or instrument calibration
- Laser is functioning as expected
- Vial is clean
- Drying system functional
- Flow is within expected range



#### Service Indicator

- 7 - 14 days remaining until the next maintenance task (user adjustable)
- Laser is functioning as expected
- Expected desiccant life remaining
- Automatic Cleaning Module is functional

Many of the parameters and tasks considered for the measurement indicator will also be displayed through the service indicator if the related instrument components require maintenance soon.